

State of Wyoming Corner Record

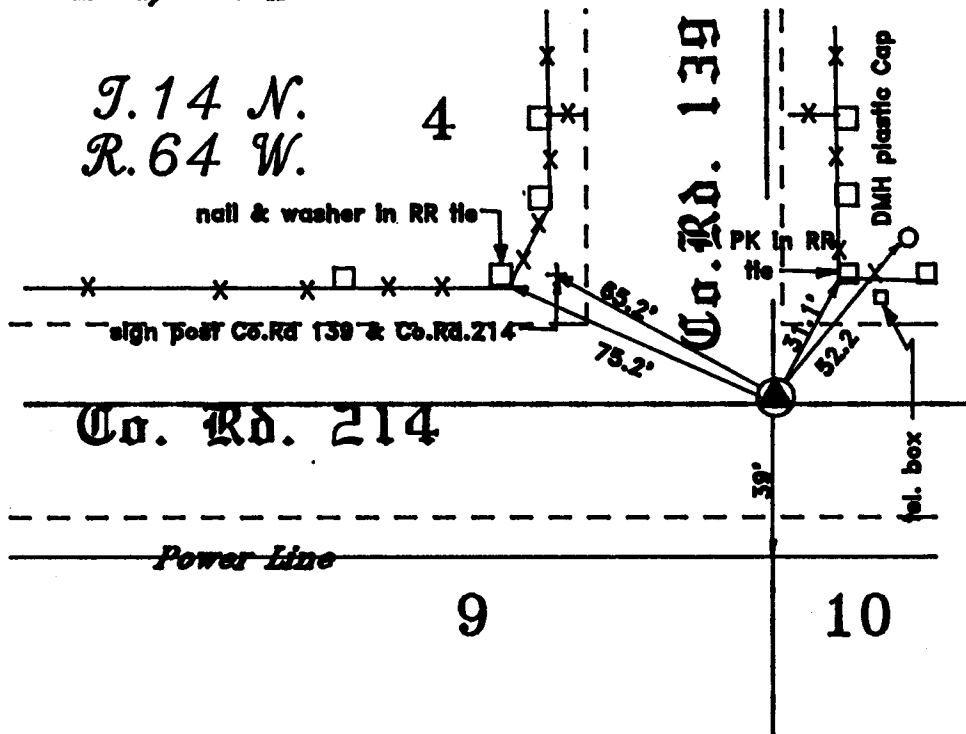
(In compliance with the CORNER PERPETUATION AND FILING ACT, Wyoming Statutes, 1977, Section 36-11-101, et. seq., and the Rules and Regulations of the Board of Registration for Professional Engineers and Professional Land Surveyors)

The Reverse side of this form may be used if more space is needed.

The record of the original survey and the citation of the source of historical information (if the corner is lost or obliterated) The description of the corner monumentation evidence as found and/or monument and accessories established to perpetuate the location of this corner. A sketch of the relative location of the monument, accessories, and reference points with course and distance to the adjacent corner(s) (if determined in this survey). The method and rationale for reestablishment of the lost or obliterated corner.

G.L.O.: North between Sec.9 & Sec.10, 40.00 set Red Sandstone
 17"X8"X5" for 1/4 Section corner; 80.00 set Red Sandstone
 18"X9"X5" for corner to Section 3,4,9 & 10.

SBT: 3-14" Aluminum Cap on 5/8"X 36" rebar. set at proportionate distance North to South utilizing 1/4 corner Sec. 15 & Sec. 16 and Section Corner of Sec.4, Sec.3, of T.14 N. R.64 W. and Sec. 33, Sec.34 of T.14 N. R. 64 W. and East to West utilizing Section corner of Sec. 5,4,8 & 9 and Section corner of Sec.1 & 12 of T.14 N. R.64 W. and Sec. 6,7 of T.14 N. R.63 W. This corner was Double Proportioned for location from the closest Found corners after diligently for corners and/or evidence of them for approximately 1 and 1/2 weeks.



210934
 LARAMIE COUNTY CLERK
 CHEYENNE, WY.
 1997 SEP 29 PM 12:02
 Larry T. Perry
 Gary N. Grigsby RIT

Note: Rebar with Aluminum Cap set 40.00' North for W.C.

Date of Field Work: _____ Office Reference: _____

Cross Index Diagram

1	2	3	4	5	6	7	8	9	10	11	12	13	14	15	16	17	18	19	20	21	22	23	24	25	26	27	28	29	30	31	32	33	34	35	36	37	38	39	40
1	2	3	4	5	6	7	8	9	10	11	12	13	14	15	16	17	18	19	20	21	22	23	24	25	26	27	28	29	30	31	32	33	34	35	36	37	38	39	40

Terrestrial Surveying & Mapping Co.
 1127 Terry Ranch Road Cheyenne, Wyoming 82007
 Phone: (307) 634-6300
This corner record was prepared by me or under my direct supervision.

Seal and Signature